



Encl. 9-24
QUEENSLAND M-88



PLAY FAIRWAY ANALYSIS
OFFSHORE NOVA SCOTIA - CANADA
June 2011

Datum elevation: 47.0 m aMSL
X-coordinate: 683423.5
Y-coordinate: 4851824.1
TD (ft MD): 4443.0
Drilled in: 2002 (PanCanadian)

Scale 1:4000
UWI: M-88 Well: QUEENSLAND M-88

Seismic Interpretation
based on reflectivity
(no reflectivity log
available for this well)

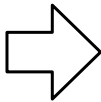
Petrophysical
Evaluation

Samples

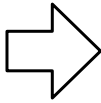
Sedimentological Data
(adapted from GeoTours Consulting Inc.)

Stratigraphic Breakdown

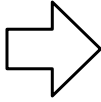
Seismic
horizon
J150



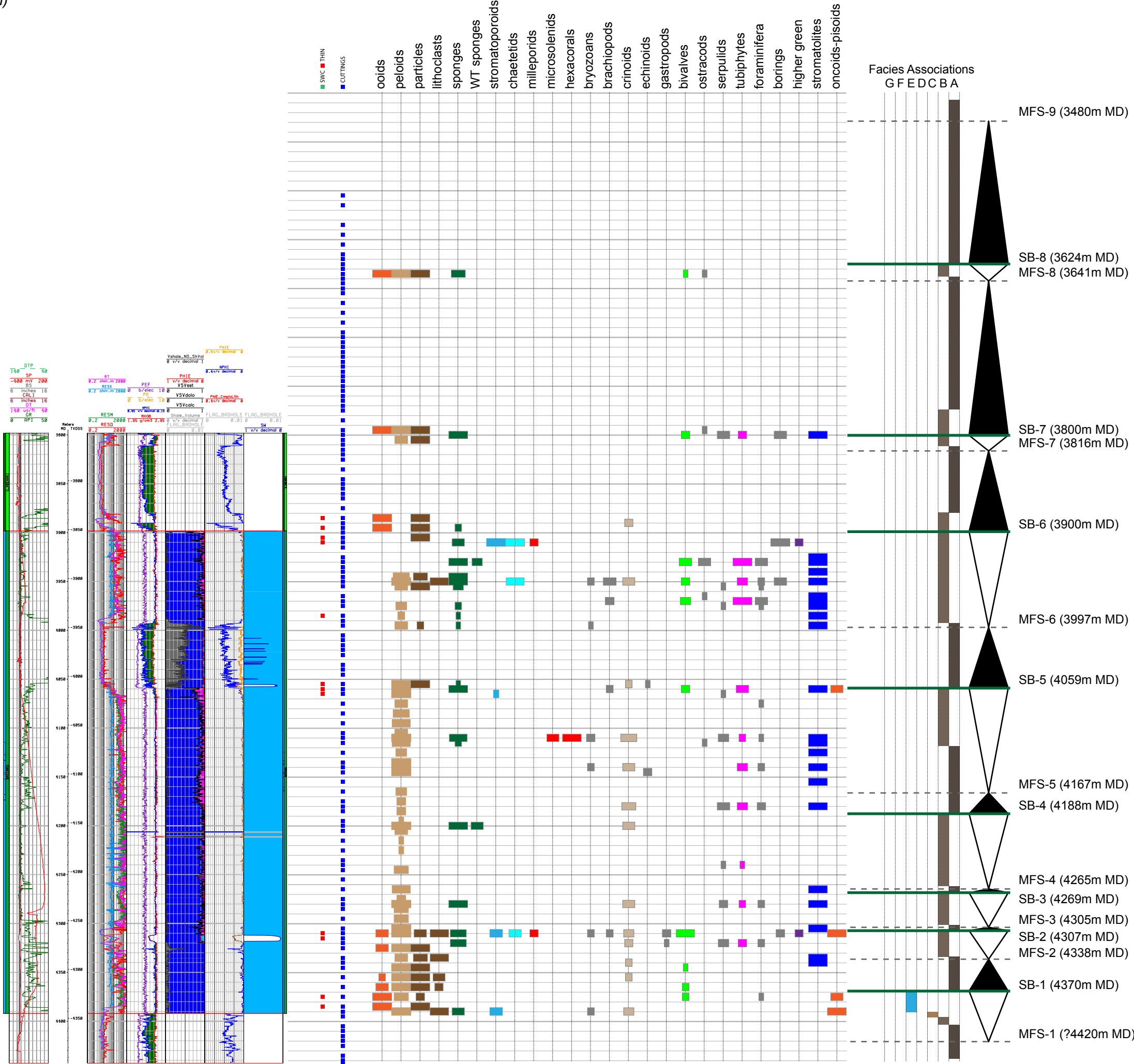
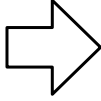
Seismic
horizon
Bac-4



Seismic
horizon
Bac-3



Seismic
horizon
Bac-2/1



PETROPHYSICAL EVALUATION

- Sandstone
- Claystone
- Limestone
- Dolomite
- Porosity

FACIES ASSOCIATIONS

- G1 - Shallow-water siliciclastics (delta to prodelta)
- G2 - Muddy (lagoon) platform interior
- F - Mixed carbonate-siliciclastic platform interior
- E - High-energy oolitic sand shoals
- D - "Clear" shallow-water corallgal reef margin
- C1 - "Turbid" shallow-water sponge reef mounds
- C - Proximal foreslope
- B - Distal foreslope
- A - Deep marine shelf

SEQUENCE STRATIGRAPHIC BREAKDOWN

- MFS - Maximum Flooding Surface
- SB - Sequence Boundary
- Base-level rise
- Base-level fall